

## Second Quarterly Report 2023

### Soubré, Ivory Coast



*Training producers in the importance of agroforestry and diversification, Degaulkro, Soubré*

## Contents

|  |   |
|--|---|
| List acronyms and abbreviations .....                                  | 1 |
| Financial supporters and project partners.....                         | 2 |
| Executive Summary .....  | 3 |
| What had us excited: key progress from the past quarter .....          | 3 |
| What challenged us: lessons learnt from the past quarter .....         | 5 |
| Next steps for the third quarter .....                                 | 6 |
| What had us excited: key progress in Q2 2023 .....                     | 7 |
| Summary of progress to date: update against the 2023 action plan ..... | 8 |

## Disclaimer

Earthworm Foundation (EF) exercised due care and skill in preparing this report but has not independently verified information provided by others. A decision to rely on this information is to be taken independently. No warranty is made in relation to the contents of this guideline. EF is not liable for any loss, damage, adverse commercial impact or inconvenience you may experience as a result of using the information we provide. EF assumes no liability for any loss resulting from errors, omissions or misrepresentations made by others.

Any findings, opinions, or recommendations stated within this report are based on the circumstances and facts existing at the time EF compiled the report. Any changes in such circumstances and facts upon which this report is based may adversely affect any findings, opinions, or recommendations contained in this report.

The materials in this report, including text and images, are protected by copyright. You may not share, copy, reproduce, republish, edit or decompile this report in any way without prior written consent from EF.

## List acronyms and abbreviations

|         |   |
|---------|---|
| AGR     | Activités Génératrices de revenu – Revenue Generating activities                                    |
| BMP     | Best Management Practices   |
| CCC     | Conseil Café Cacao - Ivorian Coffee and Cocoa Council   |
| CLMRS   | Child Labour Monitoring and Remediation System  |
| CNRA    | Centre Nationale de Recherche Agronomique – National Center for Agronomic Research                  |
| EF      | Earthworm Foundation  |
| ICRAF   | The Center for International Agroforestry Research  |
| MINADER | Ministère de l’Agriculture et du Développement Rural- Ministry of agriculture and Rural Development |
| MINEF   | Ministère des Eaux et Forêts – Water and Forest Ministry  |
| MoU     | Memorandum of Understanding   |
| PFT     | Pro Fair Trade  |
| SIPEFCI | Société Internationale de Plantations et de Finance en Côte d’Ivoire                                |
| SODEFOR | Société de Développement des Forêts – National Forest Development Agency                            |
| VSLA    | Village Saving and Loan and Association – Association Villageoise d’épargne et de crédit (AVEC)     |

# Financial supporters and project partners

EF wishes to thank the following companies and donors for their generous financial support. The impacts achieved through the **Soubré Landscape** are made possible through these companies' and institutions' continued leadership and investments in landscape-level transformation.

## Associated Funders

---



## Contributors

---



## Project partners

---



**SODEFOR**



**MINEF**



**SIPEF-CI**



**NGO**

- COOPAGRIS
- COOPALM
- Gory Scoops
- CPAY
- ECASO
- UEPAO
- SCOPACI
- CNIBO
- SOCAGS

**Cooperatives**

**COLOMBE IVOIRE**

**Local NGO**

## Executive Summary

During the second quarter of 2023, EF delivered more training sessions to educate more communities in the relevant concepts. As a result, communities adopted the practices of making bio-stimulants and bio-pesticides and using the project planning document to monitor activities. The focus of the activities was to enable communities to become more self-reliant, including the producers supplying palm oil fruit bunches in SIPEFCI's supply area. Progress has been made in social welfare, with a list of the registrations of births of school-age children being drawn up in two localities.

### What had us excited: key progress from the past quarter

#### Supply chain transformation:

- ✦ Collaborative agreement signed with the ECAO cooperative
- ✦ **In Q1-2023, EF** recorded the details of the polygons and published **641 cacao plantation maps** of the GORY SCOOPS cooperative (villages: Obrouayo, Zergbeu, Kpada, Dobré, Lazoa, Bénianssou, Kossou, Koudouyo, Badayo, Mambery 2 and Degaulkro). Mapping the farms makes it possible to show the cooperative's supply circuit on a map.
- ✦ **EF** delivered **education and training sessions** to **101 producers** in SIPEFCI's supply area on the sustainable production of palm oil in 18 localities. This indicator is quantified in the "Resilient farmers" pillar but is also reported here because it helps to transform the supply chain.

#### Forest Protection

- ✦ SODEFOR delineated and parcelised the 500 ha given over to EF for reforestation from 2023 to 2025. By the end of 2023, the objective is to reforest 50 to 100 ha within this parcel. It should be noted that 90% of the Mont Kourabahi forest reserve (MKFR) is taken up by cacao. It is a category 2 forest, which means that permanent agroforestry is permitted there. Accordingly, our reforestation in this forest area will consist of agroforestry in the areas where cacao palms are present and restoration of degraded areas and fallow land.
- ✦ The HCV study in and around the Mont Kourabahi forest reserve will begin during the next quarter. This study is due to begin once the 500-ha area to be reforested has been delineated.
- ✦ Maintenance of the old reforestation, carried out in 2021, is under way. This sub-activity involves clearing weeds from around the trees to ensure success of the reforestation and agroforestry.



- ✦ **110 women** (Q2-2023) gained access to finance by joining VSLAs. 33 new AGRs were introduced by women. **Five new VSLAs** were set up in three villages: Obrouayo, Dégaulkro and Béniansou. This brings the total number of VSLAs in the Landscape to 23.

#### Regenerative agriculture:

- ✦ EF coached two new **producers** in Dobré in how to introduce trees on their oil palm parcels. A site visit was carried out to choose the locations of the trees.
- ✦ Monitoring continued of the pilot cash-crop parcels begun in 2022 (also considered a form of agroforestry) of **three producers**. In Q2-2023, a female member of a VSLA joined the programme. As part of the pilot project, she was provided with a poultry nucleus in Mambehiri 2.

#### Workers & families:

- ✦ The project team initiated an activity with the directors of primary schools in two localities (Obrouayo et Badayo). Of the school-age children of producers, 542 out of 806 do not have a birth certificate. This is a sub-activity designed to deliver 10 partnerships on child protection.
- ✦ **Revision of a draft collaborative agreement with the Ministry of the Family, Women and Children** is under way to provide social welfare and human rights training for the EF team, along with support for establishing remediation committees in the partner communities by the end of 2023. This will facilitate the establishment of child protection committees in the different communities and the drafting of partnership agreements designed to regulate how they operate.
- ✦ The socio-professional conditions of **10 extension officers working for the cooperatives** (CPAY, GORY SCOOPS) were verified and were found to comply with the legislation in force in Ivory Coast (employment contract in place, regular salary, social security registration under way).
- ✦ To facilitate access by indigenous producers to the service provided by the rural land agency (AFOR) and encourage them to have their land certificates/title deeds drawn up, we have begun discussions with AFOR. Producers are still reluctant to begin the process. They face issues concerning their boundaries with adjoining farms and disputes within their own families that will have to be resolved before the land certification process can be started. In addition, obtaining this document is very costly for them. Existing initiatives and projects involving AFNOR in other regions lead us to believe that there will be opportunities to subsidise the cost of certification.

#### Stakeholders support:

We have developed **two tools**:

- a project planning document to help farmers establish good management practices and to become aware of the profit-making potential of their activity;
- a series of educational videos designed to educate producers about good and innovative farming practices.

## **What challenged us: lessons learnt from the past quarter**

- ➞ During the second quarter, the team had great difficulty in securing the services of the SODEFOR extension officers to delineate the 500 ha within the Mont Kourabahi forest reserve for reforestation of the degraded and agroforestry areas in the cacao-growing zones. The task was finally completed only after a last-minute rush. Regrettably, the annual objective will have to be revised downwards due to the deadline of the end of July set for all reforestation activities in Ivory Coast. The teams are working hard to plant the additional natural species required on 50 ha before the end of July.

- ➔ A change was made to the way EF field officers are allocated to meet their training needs more effectively, in particular with respect to the activities related to SIPEFCI's supply chain. Reorganisation of the activities to reflect this new allocation has now been completed. However, this change did present a few challenges.
- ➔ In **regenerative agriculture**, producers are not enthused by activities that do not generate income in the short term. This has been an obstacle to achieving the objectives that we are trying to meet to improve the situation. With some of these producers, we are planning to conduct pilot schemes involving short-cycle agricultural activities such as farming chickens, snails and small ruminants. We will make use of the collaborative arrangements we have with the cooperatives to make progress on the introduction of trees on the plantations on their producer members.

## Next steps for the third quarter

### Supply chain transformation :

- ➔ Continue discussions with the cooperatives with a view to drawing up cooperation agreements.
- ➔ Improve traceability within the supply area of the cooperatives and oil mill, including mapping the plantations and product circuits (cacao, palm oil fruit bunches).
- ➔ Manage and monitor the activities of the villager planters in SIPEFCI's supply area in relation to the RSPO.

### Forest protection and restoration :

- ➔ Reforest 50 to 100 ha by the end of 2023 in the reforestation zone in the Mont Kourabahi forest reserve allocated to EF.
- ➔ Continue with the HCV and HCS study around and within the forest.

### Resilient farmers :

- ➔ Continue to train and coach women and producers in how to make and use bio-pesticides and bio-stimulants.
- ➔ Provide support for palm oil producers in replacing their orchards: purchase of plants at cost price, use of finance to buy germinated seeds for planting in 2024.
- ➔ Coach producers and women to enable them to become familiar with and use the project planning document.
- ➔ Experiment with snail farming with volunteer producers.

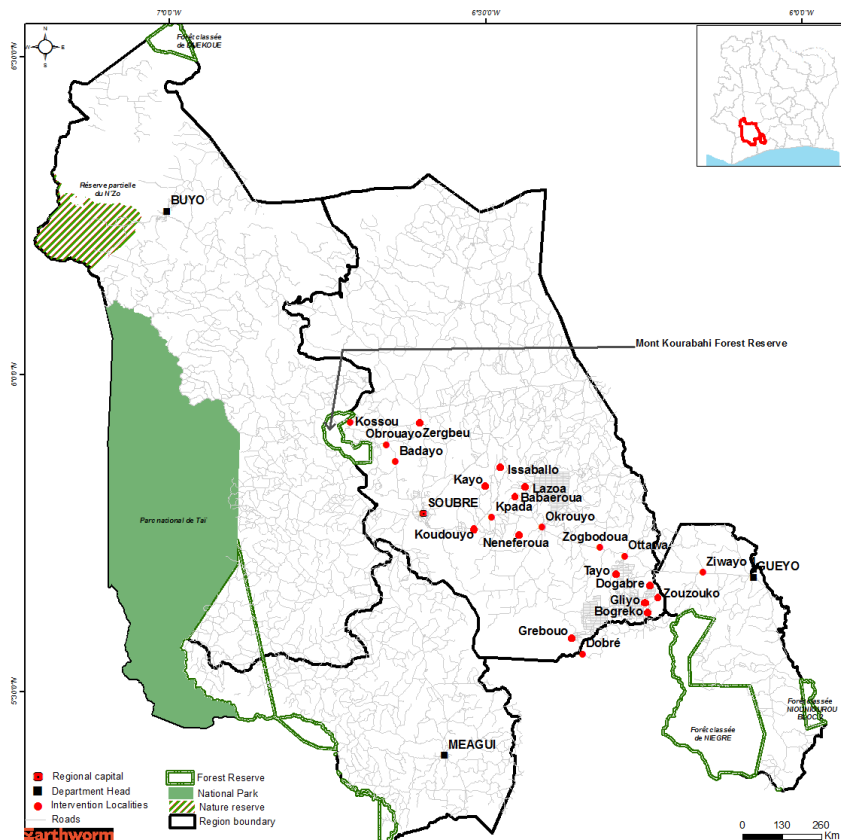
### Regenerative agriculture :

- ➔ Working with the cacao cooperatives to encourage producers to introduce and maintain trees in their orchards.
- ➔ Analyse a pilot project with a view to extending poultry farming on palm plantations.

### Workers and families:

- ➔ Discussion with directors of primary schools and senior community figures to improve the situation of school-age children without a birth certificate.
- ➔ Raise awareness in communities of the importance of child protection and particularly with respect to birth registration: the right to life and to an identity.

# What had us excited: key progress in Q2 2023



306 new producers were trained in regenerative agriculture and diversifying income sources.

EF delivered education and training sessions to the **101 producers** in SIPEFCI's supply area

**110 women** (Q2-2023) gained access to finance by joining VSLAs.

SODEFOR delineated and parcelised the 500 ha given over to EF for reforestation from 2023 to 2025. By the end of 2023, the objective is to reforest 50 to 100 ha within this 500-ha area.

Details of the polygons recorded and 641 cacao plantation maps of the GORY SCOOPS cooperative published.

Two tools developed:

- a project planning document to help farmers establish good management practices and to become aware of the profit-making potential of their activity;
- a series of educational videos designed to educate producers about good and innovative



# Summary of progress to date: update against the 2023 action plan

| Supply chain transformation   |                  | Forest protection and restoration   |  | Resilient farmers   |   | Regenerative agriculture  |   | Workers & families  |   | Stakeholders support  |                                     |
|---|------------------|---|--|---|---|---|---|---|---|---|-------------------------------------|
| KPI 2023  | Progress Q2 2023 | KPI 2023  | Progress Q2 2023                             | KPI 2023  | Progress Q2 2023                        | KPI 2023  | Progress Q2 2023                          | KPI 2023  | Progress Q2 2023                              | KPI 2023  | Progress Q2 2023                    |
|  |                  |  |  |    |   |  |   |        |   |  |                                     |
| 6 MoUs with cooperatives  | 1 MoU secured    | 150 ha of degraded forest restored  | Delineation of 500 completed. 50 ha restored | 1200 farmers reached on increasing farmer resilience                                | 699 farmers reached in Q2               | 260 farmers implement agroforestry  | 2 farmers introduced agroforestry         | 30 workers with good work conditions  | 10 workers with good work conditions          | 2 tools/stories/case studies  | 2 tool have been created and tested |
|  |                  |  |  |    |   |  |   |        |   |   |                                     |
| 1600 farms mapped   | 894 farms mapped | 1 participatory land use map  | The HCV will begin during the next quarter   | 160 ha old cocoa and Palm farms renewed with new cocoa and palm trees.              | 27.5 ha of palm farms renewed           | 260 ha under agroforestry system  | 2 farmers introduced agroforestry on 2 ha | 1 MoUs with social partners and communities   | Action plan approved by the team and partners |   |                                     |
|   |                  |   |  |  |   |   |   |      |   |   |                                     |
|   |                  |   |  | 300 women have access to finance  | 169 women have gained access to finance |   |   | Facilitate access of indigenous producers to the service provided by the rural land agent | Engagement with AFOR in progress              |   |                                     |

